

calyxo

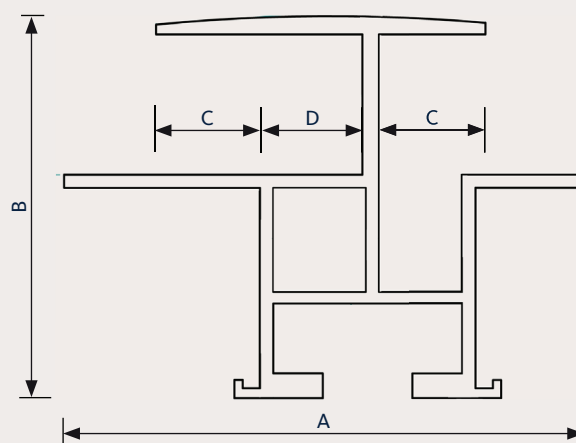
CROOS PROFILE INSERTION SYSTEM

MX

MECHANICAL SPECIFICATION

Width [A]	63,15 mm
Height [B]	46,3 mm
Mounting depth [C]	11,0 mm (incl. EPDM 13,0mm)
Insection depth [D]	12,0 mm
Profile length	6010 mm
Weight / Meter	1,010 kg
EPDM	Shore hardness 60 +/-5
EPDM width	80,0 mm
Application	Cross Profile Application Pitched Roofings, Facade

TECHNICAL DRAWING



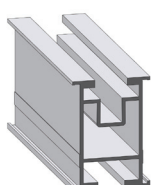
DESCRIPTION

With the Calyxo MX insertion system, you install frameless Calyxo modules of the CX-Series are greatly improved. Specifically designed for the mounting of glass-glass laminates, the Calyxo MX insertion system is compatible with frameless modules suitable for all mounting variations. This is due to its insertion technique no sticking or screwing is required. Thermal expansion of the roof surface, roof skin or the profile beam are decoupled from the floating module storage of the overall system. The module does not undergo any mechanical stresses and is therefore mounted gently.

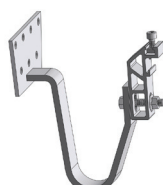
BENEFITS

- specifically for frameless modules
- quickly installed and easy to maintain improving installation times
- tool-free module assembly
- robust design and module-friendly
- designed for glass-glass laminates with 6.9 mm + / -0.2 mm thickness (adaptable to other possible strengths)
- use of durable materials such as aluminum ensuring longevity and reliability
- high stability
- suitable for direct use on pitched roof surfaces, facade, etc.

ACCESSORIES



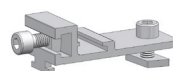
CROSS PROFILE



ROOF HOOK



HANGER BOLT



CROSS CONNECTOR

calyxo

CALYXO GMBH

OT Thalheim, Sonnenallee 1a
06766 Bitterfeld-Wolfen, Germany

TEL +49 (0)3494 368 980-101

FAX +49 (0)3494 368 980-111

EMAIL calyxo@calyxo.com

WEB www.calyxo.com

Note:
Installation instructions must be followed.
See the installation and operating manual or contact the technical service for further information on approved installation and use of the product.
Specifications subject to technical changes. Printed on environment-friendly paper. © Calyxo GmbH EU/English; MX_Rev. 1, September 2012