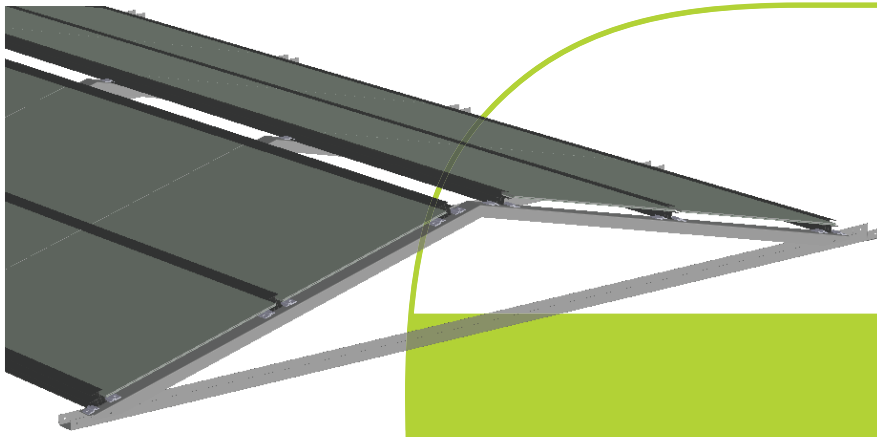
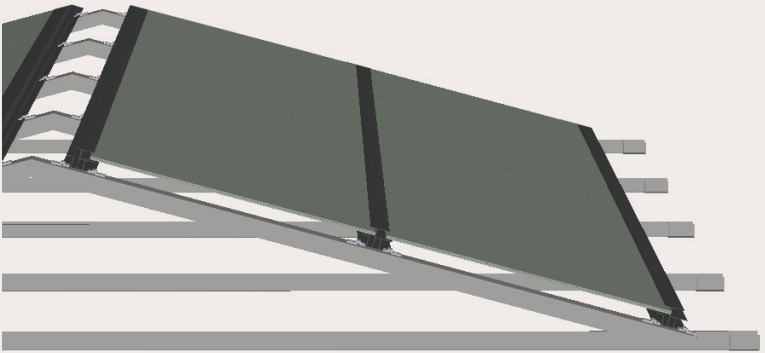


INSERTION SYSTEM EAST-WEST SYSTEM



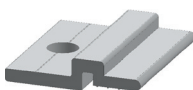
MECHANICAL SPECIFICATION		TECHNICAL DRAWING
Orientation	East - West	
Mounting angle	15°	
Dimension (L x H)	290 cm x 30 cm	
Distance stud frame	max. 160 cm	
Insertion profile length	6050 mm	
Edge distance	with attica 90 cm without attica 140 cm	
mechanical load incl. module	on request	
Applications:		
Cross connection	Flat roof on foil, gravel, bitumen, etc.	

DESCRIPTION	
<ul style="list-style-type: none"> • high-quality materials with high corrosion resistance • suitable for flat roofs up to 5° angle on foil, gravel, bitumen etc. • aerodynamic designed and approved • minimum load increase with maximum stability • efficient tilt angle 15° • short installation time • no roof penetration • building surface protection optional 	<ul style="list-style-type: none"> • extremely light • no point loads • barriers modular convertible • easy expansion possible • optimal ventilation • project-based static analysis of all European sites • very good handle and small transport size • integrated cable channels • no warranty issues mixing of trades

ACCESSORIES



EPDM



X-CONNECTOR

Note:
Installation instructions must be followed.
See the installation and operating manual or contact the technical service for further information on approved installation and use of the product.
Specifications subject to technical changes. © Calyxo GmbH EU/English; OW_Rev. 0, November 2013